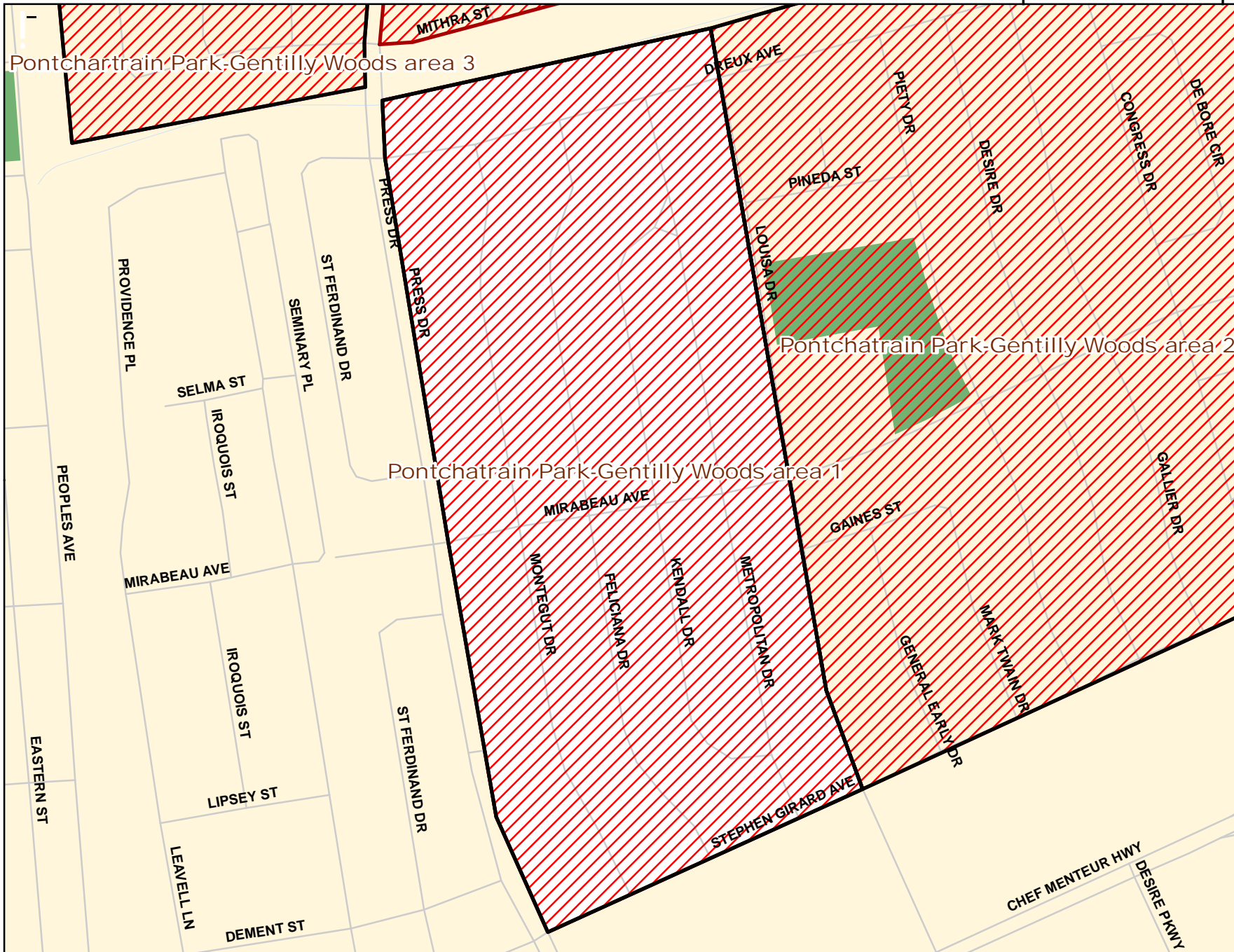




CITY OF NEW ORLEANS  
MAYOR'S OFFICE  
OF  
TECHNOLOGY

GIS DEPARTMENT  
gis@cityofno.com



Pontchartrain Park-Gentilly Woods area 3

Pontchartrain Park-Gentilly Woods area 2

Pontchartrain Park-Gentilly Woods area 1

Pontchartrain Park-Gentilly Woods area 1

**Legend**

**Sweep Status**

-  Completed
-  Upcoming
-  Underway



0 500 1,000 Feet

CNOGIS: gis-raw\gis\_working\nora\mxds\nora\_sweeps\_mapbook\_010909.mxd 1/13/2009

**Disclaimer Notice:** "This is not a survey-quality product. The information is derived from the City of New Orleans Enterprise GIS Database. The City of New Orleans does not assume any liability for damages arising from errors, omissions, or use of this information. End users of the data are advised to be aware of the positional accuracy, data collection dates, compilation methods, and cartographic format (as described in the accompanying metadata), and are advised to utilize these data appropriately." Use of these data for any reason other than for informational purposes is NOT recommended, and the liabilities of such usage are the sole responsibility of the entity using or redistributing the data.